

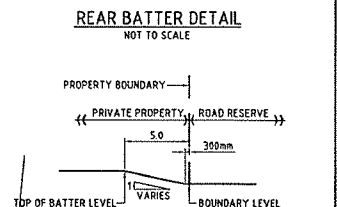
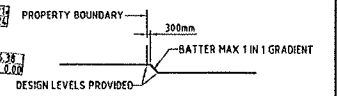
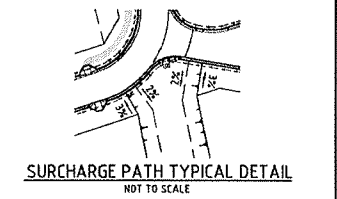
LEGEND

ALLOTMENT FILL

DENOTES BATTER TO EXIST. AT 1 IN 6 SLOPE

FINAL SURFACE LEVEL WITH REQUIRED CUT OR FILL (-0.89) CUT VALUE OR (0.32) FILL VALUE. WHERE 'WAY' IS RECORDED AGAINST THE LEVEL AND THE ACTUAL LEVEL IN SITU VARIES FROM THE SURFACE LEVEL INDICATED ON THE DRAWINGS THE IN SITU LEVEL SHALL TAKE PRECEDENCE.

NATURAL SURFACE CONTOURS



NOTES

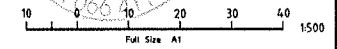
- DESIGN LEVELS SHOWN INSIDE OF PARKS AND AT BOTTOM OF BATTERS IN PARKS WERE LOWERED BY 100mm FOR BULK EARTHWORKS TO ALLOW FOR TOPSOIL AND TURF BY LANDSCAPING CONTRACTOR
- ALL WORKS IN PARK WERE PEGGED AND VERIFIED BY SUPERINTENDENT PRIOR TO COMMENCING WORKS
- ALL PARK BATTER TREATMENTS ADJACENT EXISTING GULLY ARE FINISHED WITH A SLOPE OF 1 ON 3. FINAL BATTER TREATMENTS AS PER LANDSCAPE ARCHITECTS DETAIL.

BRAZIER MOTTIPTY LTD. ACN 066 411 041
 595 FLINDERS ST. TOWNSVILLE, HEREBY CERTIFY THAT THIS DRAWING ACCURATELY AND CORRECTLY DESCRIBES AND RECORDS THE NATURE AND LOCATION OF THE WORKS DEPICTED BY ASTERISKS (*) HEREON AS THEY HAVE BEEN CONSTRUCTED FOR SUBDIVISION.

Dated: This 17 day of FEB 2008

LICENSED SURVEYOR & DIRECTOR

DATUM
 PH No. 131651 LOCATED ON HERVEY RANGE ROAD (BOLT IN BITUMEN)
 RL 19.248m AHD



No.	ORIGINAL ISSUE	By	Appd	Date	No.	Amendments	By	Appd	Date
A		SJJ		20/3/08					

kalynda chase

urbex

BMD CONSULTING

Civil Engineers
 Structural Engineers
 & Project Managers

Townsville Office
 27 Herold Street
 Phone: 071 4796 7008
 Fax: 071 4796 7073
 P.O. Box 4048
 Townsville, QLD 4810
 Email: info@bmd.com.au
 Website: www.bmd.com.au

Brisbane Office
 1511
 Sydney Office
 1511
 Cairns Office
 1511

Design	E.J.C.	Client	
Drawn	S.J.J.	Project	
Checked	J.L.		
Original Approved By			
RPEQ No.	8948		
Date	FEB 2008		
Datum	A.H.D.		

URBEX PTY LTD

KALYNDA STAGE 5A

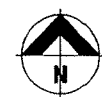
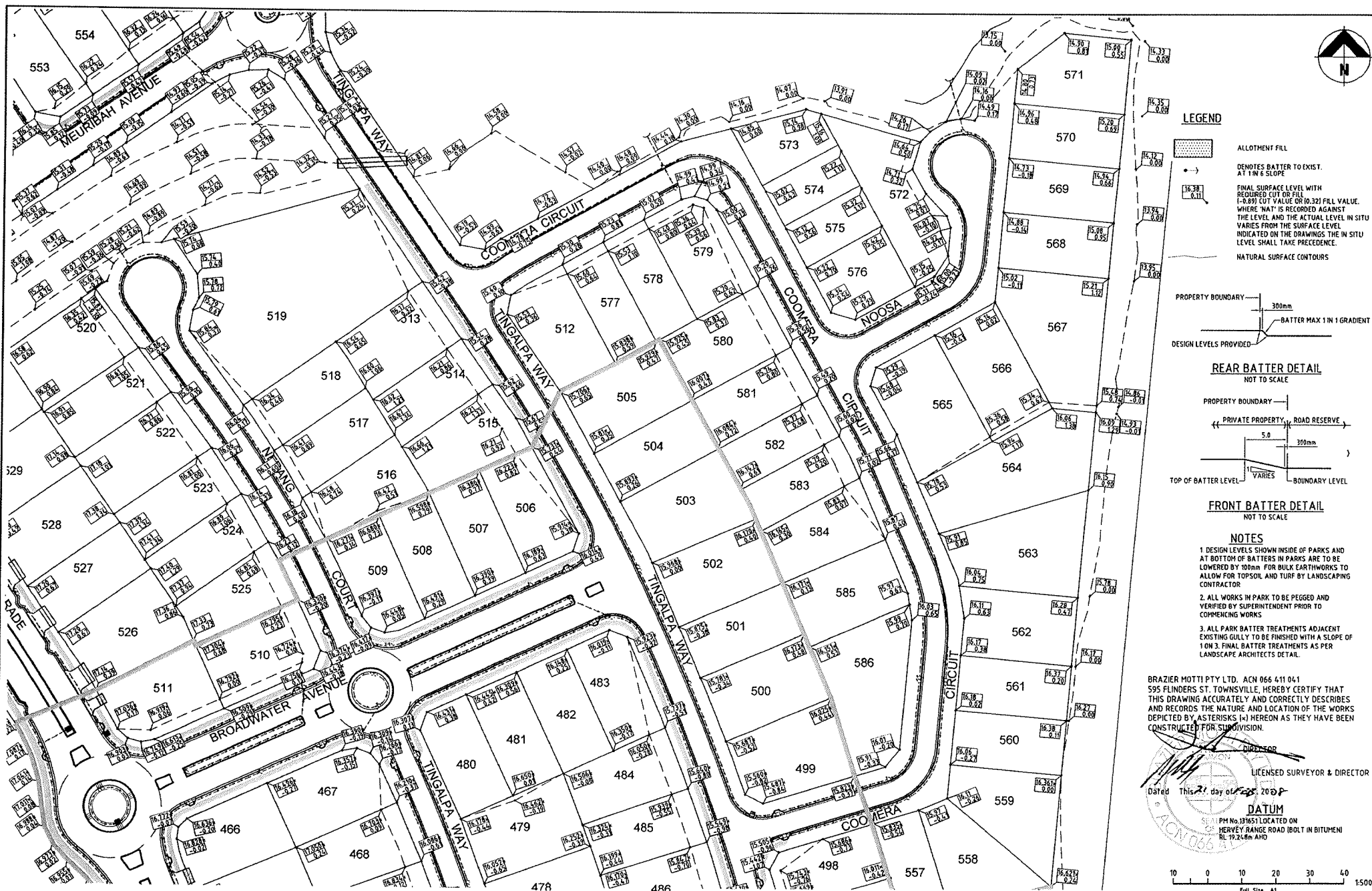
EARTHWORKS LAYOUT PLAN

SHEET (1 OF 2)

AS CONSTRUCTED

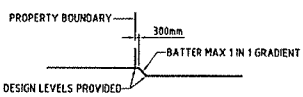
Drawing No. **CT-1403-101** Rev **A**

THIS DRAWING CANNOT BE COPIED OR REPRODUCED IN ANY FORM OR USED FOR ANY OTHER PURPOSE OTHER THAN THAT ORIGINALLY INTENDED WITHOUT THE WRITTEN PERMISSION OF BMD CONSULTING PTY LTD.

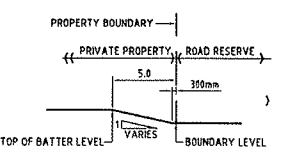


LEGEND

- ALLOTMENT FILL
- DEMOTES BATTER TO EXIST. AT 1 IN 6 SLOPE
- FINAL SURFACE LEVEL WITH REQUIRED CUT OR FILL (-0.89) CUT VALUE OR (0.32) FILL VALUE. WHERE 'NAT' IS RECORDED AGAINST THE LEVEL AND THE ACTUAL LEVEL IN SITU VARIES FROM THE SURFACE LEVEL INDICATED ON THE DRAWINGS THE IN SITU LEVEL SHALL TAKE PRECEDENCE.
- NATURAL SURFACE CONTOURS



REAR BATTER DETAIL
NOT TO SCALE



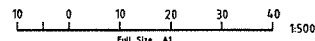
FRONT BATTER DETAIL
NOT TO SCALE

- NOTES**
- DESIGN LEVELS SHOWN INSIDE OF PARKS AND AT BOTTOM OF BATTERS IN PARKS ARE TO BE LOWERED BY 100mm FOR BULK EARTHWORKS TO ALLOW FOR TOPSOIL AND TURF BY LANDSCAPING CONTRACTOR
 - ALL WORKS IN PARK TO BE PEGGED AND VERIFIED BY SUPERINTENDENT PRIOR TO COMMENCING WORKS
 - ALL PARK BATTER TREATMENTS ADJACENT EXISTING GULLY TO BE FINISHED WITH A SLOPE OF 1 ON 3. FINAL BATTER TREATMENTS AS PER LANDSCAPE ARCHITECTS DETAILS.

BRAZIER MOTTI PTY LTD. ACN 066 411 041
595 FLINDERS ST. TOWNSVILLE, HEREBY CERTIFY THAT THIS DRAWING ACCURATELY AND CORRECTLY DESCRIBES AND RECORDS THE NATURE AND LOCATION OF THE WORKS DEPICTED BY ASTERISKS (*) HEREON AS THEY HAVE BEEN CONSTRUCTED FOR SUBDIVISION.

Dated This 21 day of Feb 2008

 LICENSED SURVEYOR & DIRECTOR
 DATUM
 57.11 PM No 131651 LOCATED ON HERVEY RANGE ROAD (BOLT IN BITUMEN) RL 19.24.6m AND



No	ORIGINAL ISSUE	By	Appd	Date	No	Amendments	By	Appd	Date
A	ORIGINAL ISSUE	S.J.J		20/02/08					
	Amendments								



BMD CONSULTING
 Civil Engineers
 Structural Engineers
 & Project Managers
 488 23 010 143 482

Townsville Office: Ph: 071 4238 3000
 Mackay Office: Ph: 071 4238 3000
 Brisbane Office: Ph: 071 4238 3000
 Sydney Office: Ph: 02 9298 5400
 Townsville Office: Ph: 071 4238 3000

Design	E.J.C.	Client	
Drawn	S.J.J	Project	
Checked	J.L.		
Original Approved By:			
RPEQ No.	444		
Date	FEB 2008		
Datum	A.H.D.		

URBEX PTY LTD
KALYNDA STAGE 5A

EARTHWORKS LAYOUT PLAN
SHEET (2 OF 2)

NOT FOR CONSTRUCTION
 Drawing No. CT-1403-102
 Rev A

DRAWN BY: S.J.J
 CHECKED BY: J.L.
 DATE: 20/02/08
 PROJECT: KALYNDA STAGE 5A
 SHEET: 2 OF 2

THIS DRAWING CANNOT BE COPIED OR REPRODUCED IN ANY FORM OR USED FOR ANY OTHER PURPOSE OTHER THAN THAT ORIGINALLY INTENDED WITHOUT THE WRITTEN PERMISSION OF BMD CONSULTING PTY LTD.