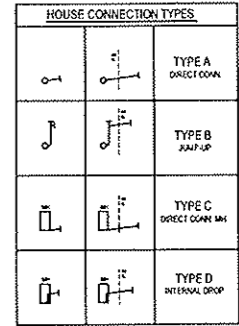
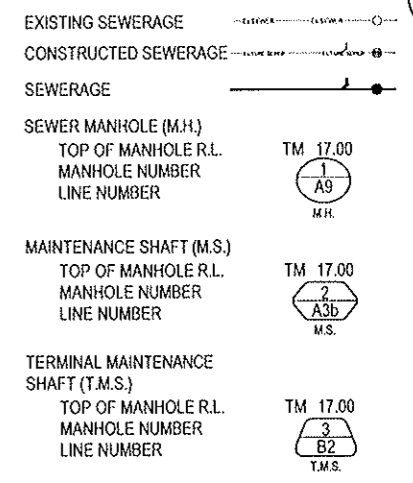


BRAZIER MOTTS PTY LTD. ACN 066 411 041
 595 FLINDERS ST. TOWNVILLE, HEREBY CERTIFY THAT
 THIS DRAWING ACCURATELY AND CORRECTLY DESCRIBES
 AND RECORDS THE NATURE AND LOCATION OF THE WORKS
 DEPICTED BY ASTERISKS (*) HEREON AS THEY HAVE BEEN
 CONSTRUCTED FOR SUBDIVISION.

Dated This 15 day of May 2010
 THE DIRECTOR
 THE LICENSED SURVEYOR & DIRECTOR
 ACN 066 411 041

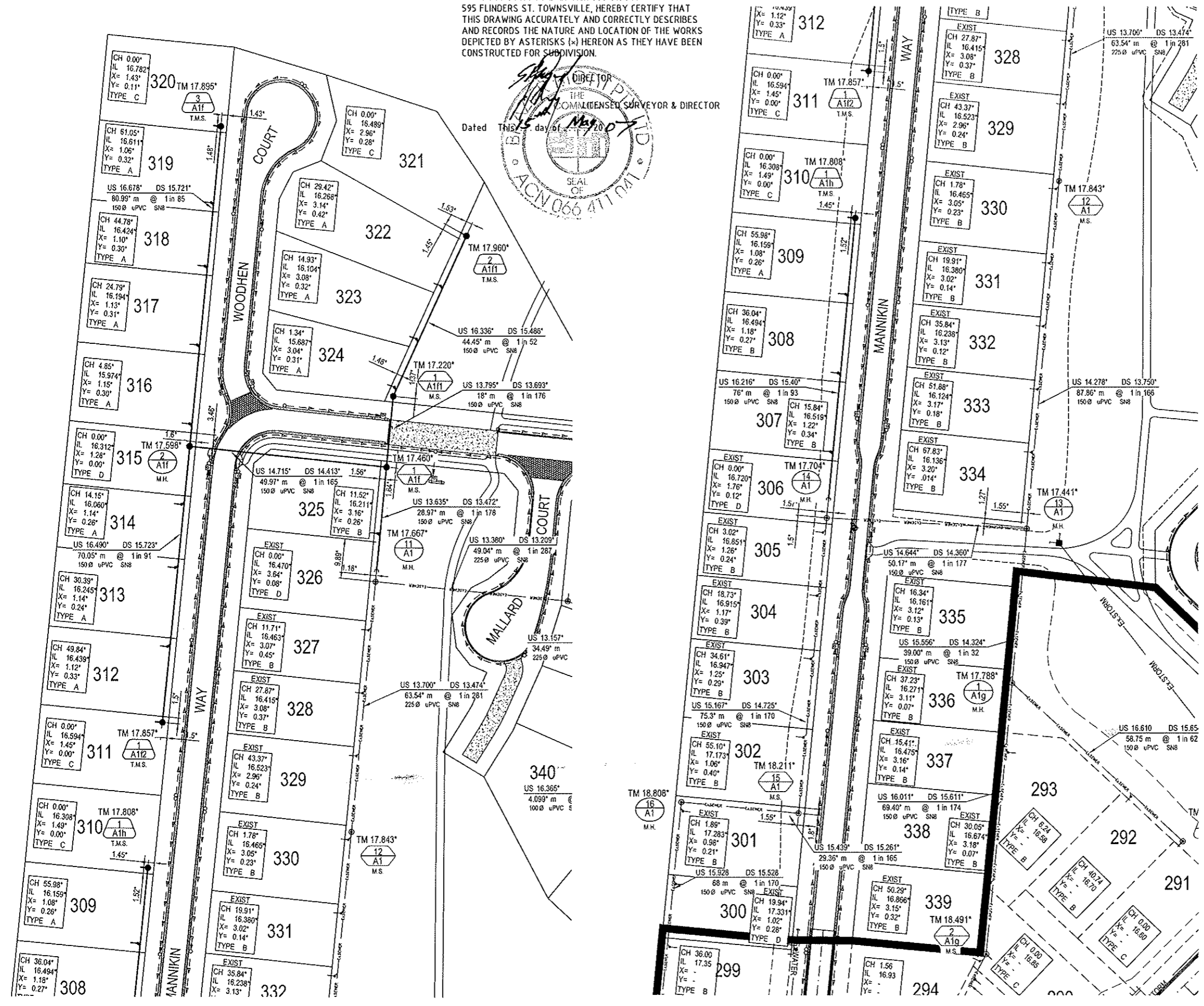
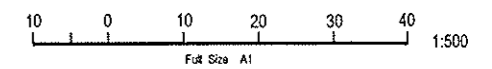
SEWERAGE LEGEND



SEWERAGE NOTES

- ALL LINES LESS THAN 5.7m DEEP ARE 150MM DIAMETER PVCU DWV SN8 IN ACCORDANCE WITH STANDARD AS/NZS 1260:1999. UNLESS SHOWN OTHERWISE.
- ALL 100mm DIAMETER SEWER LINES LESS THAN 5.7m DEEP ARE PVCU DWV SN10 IN ACCORDANCE WITH STANDARD AS/NZS 1260:1999. UNLESS SHOWN OTHERWISE.
- ALL WORK IS CONSTRUCTED IN ACCORDANCE WITH CURRENT C.O.T. STANDARD METHODS AND DRAWINGS. 10400 TO 10460.
- EACH ALLOTMENT IS SERVED BY A 100MM PROPERTY CONNECTION.
- O.B.'S ARE LOCATED 1.5m FROM DOWNSTREAM ALIGNMENT.
- PROPERTY CONNECTION BRANCHES EXTEND INTO THE PROPERTY A MINIMUM OF 1.0m.
- INSTALLATION AND COMPACTION OF TRENCH BACKFILL IS CARRIED OUT STRICTLY IN ACCORDANCE WITH C.O.T. AUS. SPEC. AND TO THE COMPACTION VALUES SHOWN IN THE JOB SPECIFICATION SCHEDULES.
- PROPERTY CONNECTIONS CROSSING U/G ELECTRICITY ALLOCATION TO HAVE A MINIMUM OF 1.0m COVER.
- TOP OF MANHOLES ARE 150mm ABOVE F.S.L. AS PER C.O.T. STANDARD DWGS.
- ROAD CROSSINGS BACKFILLED WITH CRUSHER DUST COMPACTED TO NOT LESS THAN 95% OF THE STANDARD MAX. DRY DENSITY TO A.S. 1289, INCLUDING FUTURE ROAD CROSSINGS
- SEWER MANHOLES ARE LOCATED 1.5m FROM THE PROPERTY BOUNDARIES U.N.O.

DATUM
 PM No. 131651 LOCATED ON
 HERVEY RANGE ROAD (BOLT IN BITUMEN)
 RL 19.246m AHD



No.	Amendments	By	Appd	Date	No.	Amendments	By	Appd	Date
A	ORIGINAL ISSUE	S.J.J		14.05.07					

Civil Engineers
 Structural Engineers
 Project Managers
BMD
 CONSULTING
 Townsville Office: 57 Mitchell Street, Townsville, QLD 4810. Ph: (07) 4750 7000, Fax: (07) 4750 7077, Email: bmd@bmd.com.au, www.bmd.com.au
 Brisbane Office: 100 St. George Street, Brisbane, QLD 4000. Ph: (07) 3593 1511, Fax: (07) 3593 1511, Email: bmd@bmd.com.au, www.bmd.com.au
 Sydney Office: 100 St. George Street, Sydney, NSW 2000. Ph: (02) 9696 5400, Fax: (02) 9696 5400, Email: bmd@bmd.com.au, www.bmd.com.au

Design	S.J.J	Client	URBEX Pty Ltd
Drawn	W.E.S	Project	KALYNDIA CHASE - STAGE 4C
Checked	W.E.S	T/O	AS CONSTRUCTED
Original Approved By:	[Signature]	Drawing No.	CT-1173-803
RPEQ No.	6948	Rev	A
Date	MAY '07		
Datum	A.H.D.		

THIS DRAWING CANNOT BE COPIED OR REPRODUCED IN ANY FORM OR USED FOR ANY OTHER PURPOSE OTHER THAN THAT ORIGINALLY INTENDED WITHOUT THE WRITTEN PERMISSION OF BMD CONSULTING PTY LTD.