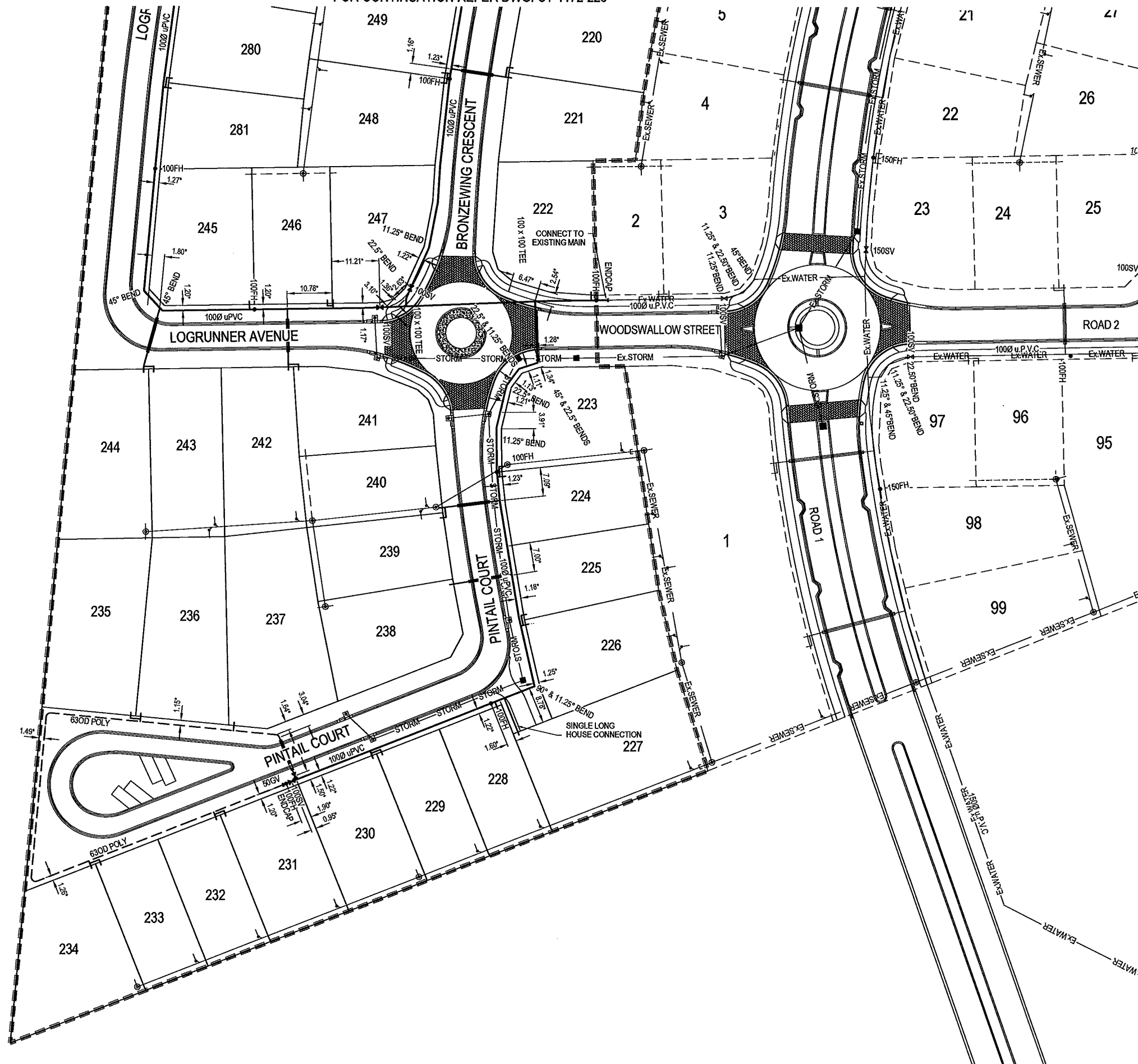


FOR CONTINUATION REFER DWG. CT-1172-226



BRAZIER MOTTI PTY LTD. ACN 066 411 041
 595 FLINDERS ST. TOWNSVILLE, HEREBY CERTIFY THAT
 THIS DRAWING ACCURATELY AND CORRECTLY DESCRIBES
 AND RECORDS THE NATURE AND LOCATION OF THE WORKS
 DEPICTED BY ASTERISKS (*) HEREON AS THEY HAVE BEEN
 CONSTRUCTED FOR SUBDIVISION.

Dated This 11th day of Dec 2006
 Director
 Licensed Surveyor & Director

WATER LEGEND

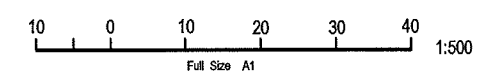
- WATER MAIN
- - - 63 OD POLYETHYLENE LOOP MAIN
- FH FIRE HYDRANT
- SV SLUICE VALVE
- GV GATE VALVE
- TEE
- END CAP
- WATER SERVICE WITH ENVELOPER
- Ex.WATER EXIST. WATER MAIN
- Ex.WATER(POLY) EXIST. WATER MAIN (POLY)
- - - - - LIMIT OF WORKS - STAGE 3

WATER NOTES

1. ALL WATER MAINS TO BE LOCATED 1.2m ALIGNMENT OFFSET FROM PROPERTY BOUNDARIES UNLESS SHOWN OTHERWISE
2. THIS DRAWING IS TO BE READ IN CONJUNCTION WITH CITY OF THURINGOWA STANDARD DRAWINGS (WATER).
3. ALL uPVC MAINS TO BE SERIES 2, PN16 TO AS/NZS 1477 RUBBER RING JOINTED, WITH SOCKETED D.I.C.L. FITTINGS U.N.O.
4. POLYETHYLENE WATER MAINS ARE TO BE SERIES 1, PE80, SDR11, PN12.5
5. CONNECTION TO EXISTING THURINGOWA COUNCIL WATER MAINS TO BE CARRIED OUT BY THE CONTRACTOR UNDER COUNCIL SUPERVISION
6. CONNECTION TO EXISTING NQ WATER MAINS TO BE CARRIED OUT BY NQ WATER AT THE CONTRACTOR'S EXPENSE.
7. CONTRACTOR TO VERIFY ALL UNDERGROUND SERVICES WITH THE RELATIVE AUTHORITIES PRIOR TO ANY EXCAVATION

DATUM

PM No.131851 LOCATED ON
 HERVEY RANGE ROAD (BOLT IN BITUMEN)
 RL 19.248



No.	Amendments	By	Appd	Date	No.	Amendments	By	Appd	Date
A	ORIGINAL ISSUE	CH		06.12.06					

Civil Engineers
 Structural Engineers
 Project Managers
 ABN 23 010 743 692

BMD CONSULTING

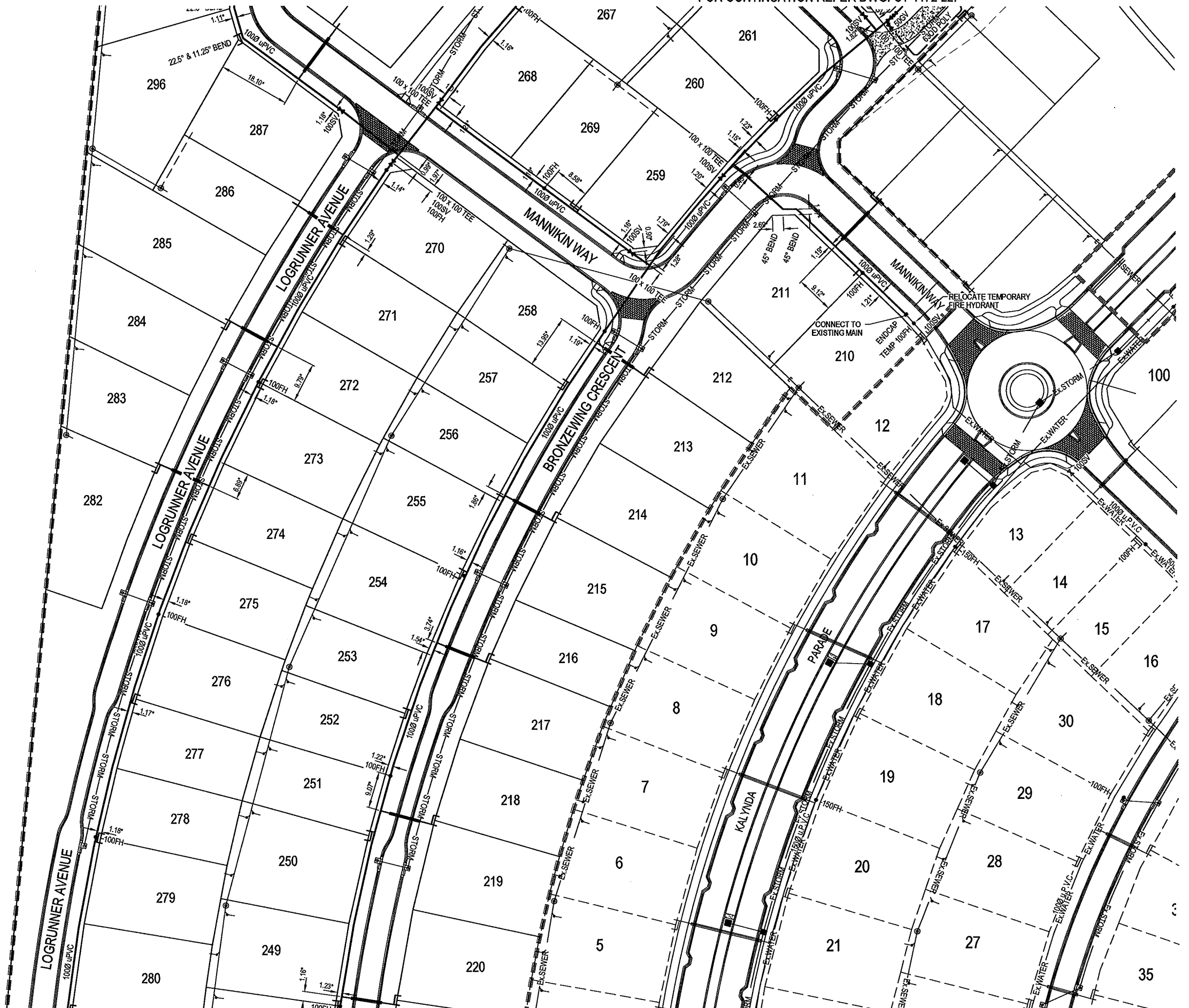
Townsville Office: 67 Mitchell Street, Townsville, P.O. Box 8006, Townsville MC, QLD 4810
 Ph: (07) 4760 7000, Fax: (07) 4760 7077, email: bmd@bmd.com.au, www.bmd.com.au

Head Office - Brisbane: Ph: (07) 3063 1811
 Cairns Office: Ph: (07) 4036 1644
 Sydney Office: Ph: (02) 9886 5400

Design	CH	Client	URBEX Pty Ltd
Drawn	JAM	Project	KALYNDIA CHASE - STAGE 3
Checked	JAM	Title	"AS CONSTRUCTED" WATER RETICULATION
Original Approved By:	<i>[Signature]</i>	Sheet	LAYOUT PLAN Sheet 1 of 3
RPEQ No.	5948	Drawing No.	CT-1172-225
Date	DEC '06	Rev	A
Datum	A.H.D.		

THIS DRAWING CANNOT BE COPIED OR REPRODUCED IN ANY FORM OR USED FOR ANY OTHER PURPOSE OTHER THAN THAT ORIGINALLY INTENDED WITHOUT THE WRITTEN PERMISSION OF BMD CONSULTING PTY LTD.

FOR CONTINUATION REFER DWG. CT-1172-227



BRAZIER MOTTPY LTD. ACN 066 411 041
 595 FLINDERS ST. TOWNVILLE, HEREBY CERTIFY THAT
 THIS DRAWING ACCURATELY AND CORRECTLY DESCRIBES
 AND RECORDS THE NATURE AND LOCATION OF THE WORKS
 DEPICTED BY ASTERISKS, IN ACCORDANCE AS THEY HAVE BEEN
 CONSTRUCTED FOR THIS DIVISION.

[Signature]
 DIRECTOR
 LICENSED SURVEYOR & DIRECTOR
 Dated This 11th day of Dec 2006

WATER LEGEND

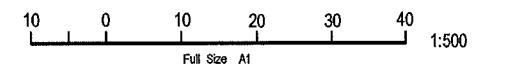
- WATER MAIN
- 63 OD POLYETHYLENE LOOP MAIN
- FH FIRE HYDRANT
- SV SLUICE VALVE
- GV GATE VALVE
- TEE
- END CAP
- WATER SERVICE WITH ENVELOPER
- Ex.WATER EXIST. WATER MAIN
- Ex.WATER(POLY) EXIST. WATER MAIN (POLY)
- - - - - LIMIT OF WORKS - STAGE 3

WATER NOTES

1. ALL WATER MAINS TO BE LOCATED 1.2m ALIGNMENT OFFSET FROM PROPERTY BOUNDARIES UNLESS SHOWN OTHERWISE
2. THIS DRAWING IS TO BE READ IN CONJUNCTION WITH CITY OF THURINGOWA STANDARD DRAWINGS (WATER).
3. ALL UPVC MAINS TO BE SERIES 2, PN10 TO AS/NZS 1477 RUBBER RING JOINTED, WITH SOCKETED D.I.C.L FITTINGS U.N.O.
4. POLYETHYLENE WATER MAINS ARE TO BE SERIES 1, PE80, SDR11, PN12.5
5. CONNECTION TO EXISTING THURINGOWA COUNCIL WATER MAINS TO BE CARRIED OUT BY THE CONTRACTOR UNDER COUNCIL SUPERVISION
6. CONNECTION TO EXISTING NQ WATER MAINS TO BE CARRIED OUT BY NQ WATER AT THE CONTRACTOR'S EXPENSE.
7. CONTRACTOR TO VERIFY ALL UNDERGROUND SERVICES WITH THE RELATIVE AUTHORITIES PRIOR TO ANY EXCAVATION

DATUM

PM No.131651 LOCATED ON
 HERVEY RANGE ROAD (BOLT IN BITUMEN)
 RL 19.248



FOR CONTINUATION REFER DWG. CT-1172-225

No.	Amendments	By	Appd	Date	No.	Amendments	By	Appd	Date
A	ORIGINAL ISSUE	CH		06.12.06					

THIS DRAWING CANNOT BE COPIED OR REPRODUCED IN ANY FORM OR USED FOR ANY OTHER PURPOSE OTHER THAN THAT ORIGINALLY INTENDED WITHOUT THE WRITTEN PERMISSION OF BMD CONSULTING PTY LTD.

Civil Engineers
 Structural Engineers
 Project Managers

BMD
 CONSULTING

ABN 23 010 743 692

Townsville Office
 57 Mitchell Street,
 Townsville
 P.O. Box 8008
 Townsville MC, QLD 4810
 Ph: (07) 4750 7000
 Fax: (07) 4750 7077
 email: bmd@bmd.com.au
 www.bmd.com.au

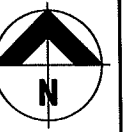
Head Office - Brisbane
 Ph: (07) 3893 1611

Calma Office
 Ph: (07) 4035 1644

Sydney Office
 Ph: (02) 9958 9400

Design	CH	Client	URBEX Pty Ltd
Drawn	JAM	Project	KALYND A CHASE - STAGE 3
Checked		Title	"AS CONSTRUCTED" WATER RETICULATION
Original Approved By:	<i>[Signature]</i>		LAYOUT PLAN Sheet 2 of 3
RPEQ No.	5948	Date	DEC '06
Date	DEC '06		
Datum	A.H.D.		

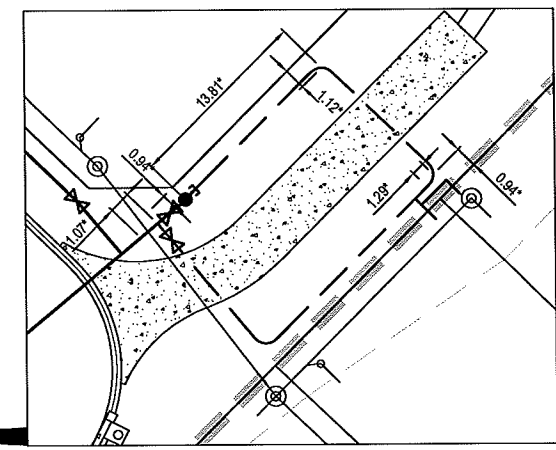
AS CONSTRUCTED
 Drawing No. CT-1172-226 Rev A



BRAZIER MOTTI PTY LTD. ACN 066 411 041
 595 FLINDERS ST. TOWNSVILLE, HEREBY CERTIFY THAT
 THIS DRAWING ACCURATELY AND CORRECTLY DESCRIBES
 AND RECORDS THE NATURE AND LOCATION OF THE WORKS
 DEPICTED BY ASTERISKS (*) HEREON AS THEY HAVE BEEN
 CONSTRUCTED FOR SUBDIVISION.

[Signature]
 DIRECTOR
 LICENSED SURVEYOR & DIRECTOR
 Dated This 22 day of July 2010

SEAL OF
 ACN 066 411 041

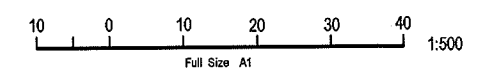


WATER LEGEND

	WATER MAIN
	63 OD POLYETHYLENE LOOP MAIN
	FH
	FIRE HYDRANT
	SLUICE VALVE
	GATE VALVE
	TEE
	END CAP
	WATER SERVICE WITH ENVELOPER
	EXIST. WATER MAIN
	EXIST. WATER MAIN (POLY)
	LIMIT OF WORKS - STAGE 3

- WATER NOTES**
1. ALL WATER MAINS TO BE LOCATED 1.2m ALIGNMENT OFFSET FROM PROPERTY BOUNDARIES UNLESS SHOWN OTHERWISE
 2. THIS DRAWING IS TO BE READ IN CONJUNCTION WITH CITY OF THURINGOWA STANDARD DRAWINGS (WATER).
 3. ALL uPVC MAINS TO BE SERIES 2, PN16 TO AS/NZS 1477 RUBBER RING JOINTED, WITH SOCKETED D.I.C.L. FITTINGS U.N.O.
 4. POLYETHYLENE WATER MAINS ARE TO BE SERIES 1, PE80, SDR11, PN12.5
 5. CONNECTION TO EXISTING THURINGOWA COUNCIL WATER MAINS TO BE CARRIED OUT BY THE CONTRACTOR UNDER COUNCIL SUPERVISION
 6. CONNECTION TO EXISTING NQ WATER MAINS TO BE CARRIED OUT BY NQ WATER AT THE CONTRACTOR'S EXPENSE.
 7. CONTRACTOR TO VERIFY ALL UNDERGROUND SERVICES WITH THE RELATIVE AUTHORITIES PRIOR TO ANY EXCAVATION

DATUM
 PM No.131651 LOCATED ON
 HERVEY RANGE ROAD (BOLT IN BITUMEN)
 RL 19.248



FOR CONTINUATION REFER DWG. CT-1172-226

No.	Amendments	By	Appd	Date	No.	Amendments	By	Appd	Date
B	ADDED DIMENSIONS TO 6300 POLY LOOP	S.J.J	[Signature]	12.07.07					
A	ORIGINAL ISSUE	C.H	J.L	06.12.06					

THIS DRAWING CANNOT BE COPIED OR REPRODUCED IN ANY FORM OR USED FOR ANY OTHER PURPOSE OTHER THAN THAT ORIGINALLY INTENDED WITHOUT THE WRITTEN PERMISSION OF BMD CONSULTING PTY LTD

Civil Engineers
 Structural Engineers
 Project Managers
 ABN 23 010 743 692

BMD
 CONSULTING

Townsville Office
 57 Mitchell Street,
 Townsville
 P.O. Box 9208
 Townsville MC, QLD 4810
 Ph: (07) 4750 7000
 Fax: (07) 4750 7077
 email: bmdtown@bmd.com.au
 www.bmd.com.au

Head Office - Brisbane
 Ph: (07) 3883 1511
 Sydney Office
 Ph: (02) 9858 5400

Calms Office
 Ph: (07) 4036 1544

urbex

Design	CH	Client	URBEX Pty Ltd	
Drawn	JAM	Project	KALYNDIA CHASE - STAGE 3	
Checked	JL	Title	"AS CONSTRUCTED" WATER RETICULATION LAYOUT PLAN Sheet 3 of 3	
Original Approved By:	JL	AS CONSTRUCTED	Drawing No.	Rev
RPEQ No.	5948	CT-1172-227	CT-1172-227	B
Date	DEC '06			
Datum	A.H.D.			