

WATER LEGEND

---	WATER MAIN
---	63 OD POLYETHYLENE LOOP MAIN
⊙	FH
⊙	FIRE HYDRANT
⊙	SV
⊙	SLUICE VALVE
⊙	GV
⊙	GATE VALVE
⊙	TEE
⊙	END CAP
---	WATER SERVICE WITH ENVELOPER
---	EXIST. WATER MAIN
---	EXIST. WATER MAIN (POLY)

- WATER NOTES**
1. ALL WATER MAINS LOCATED 12m ALIGNMENT OFFSET FROM PROPERTY BOUNDARIES UNLESS SHOWN OTHERWISE
 2. THIS DRAWING IS TO BE READ IN CONJUNCTION WITH CITY OF THURINGOWA STANDARD DRAWINGS (WATER)
 3. ALL uPVC MAINS ARE SERIES 2, PN16 TO AS/NZS 1677 RUBBER RING JOINTED, WITH SOCKETED D.I.C.L. FITTINGS U.N.O.
 4. CONNECTION TO EXISTING THURINGOWA COUNCIL WATER MAINS WERE CARRIED OUT BY THE CONTRACTOR UNDER COUNCIL SUPERVISION
 5. CONNECTION TO EXISTING NO WATER MAINS CARRIED OUT BY HD WATER AT THE CONTRACTOR'S EXPENSE.

BRAZIER MOTTI PTY LTD. ACN 066 411 041
 595 FLINDERS ST. TOWNSVILLE, HEREBY CERTIFY THAT THIS DRAWING ACCURATELY AND CORRECTLY DESCRIBES AND RECORDS THE NATURE AND LOCATION OF THE WORKS DEPICTED BY ASTERISKS (*) HEREON AS THEY HAVE BEEN CONSTRUCTED FOR SUBDIVISION

Dated This 7th day of May 20 2008

(Signature)
 DIRECTOR
 LICENSED SURVEYOR & DIRECTOR

ACN 066 411 041

DATUM
 PH No. 131651 LOCATED ON HERVEY RANGE ROAD (BOLT IN BITUMEN)
 RL 19.246m AHD

10 0 10 20 30 40
 Full Size A1 1:500

No.	Amendments	By	Appd	Date	No.	Amendments	By	Appd	Date
A	ORIGINAL ISSUE	SJJ		07/02/08					



BMD CONSULTING
 Civil Engineers
 Structural Engineers
 & Project Managers
 ABN 25 010 743 887

Design: SJJ
 Drawn: SJJ
 Checked: J.L.
 Original Approved By: *(Signature)*
 RPEQ No. 0648
 Date: APR 2008

Project Office: Ph: (07) 4356 1900, Fax: (07) 4356 1007, Email: info@bmdconsulting.com.au, www.bmd.com.au
 Sydney Office: Ph: (02) 9558 5400, Fax: (02) 9558 5444

URBEX PTY LTD
KALYNDA STAGE 5A

Client: URBEX PTY LTD
 Project: KALYNDA STAGE 5A
 Title: WATER RETICULATION LAYOUT PLAN (SHEET 1 OF 2)

AS CONSTRUCTED
 Drawing No. CT-1403-105
 Rev A

Date: 14/05/2008 13:31:41
 User: ALECIS MORELLI
 File Name: J:\CT-1403-105 - URBOX CT-1403-105 - Kalynnda Stage 5A - 1:500 - DWG - WATER MAINS LAYOUT.ctb
 Plot Date: 07/02/2008 13:31:41

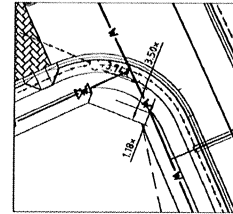
THIS DRAWING CANNOT BE COPIED OR REPRODUCED IN ANY FORM OR USED FOR ANY OTHER PURPOSE OTHER THAN THAT ORIGINALLY INTENDED WITHOUT THE WRITTEN PERMISSION OF BMD CONSULTING PTY LTD.

WATER LEGEND

- WATER MAIN
- 63 OD POLYETHYLENE LOOP MAIN
- FH FIRE HYDRANT
- SV SLUICE VALVE
- GV GATE VALVE
- TEE
- END CAP
- WATER SERVICE WITH ENVELOPER
- EXIST. WATER MAIN
- EXIST. WATER MAIN (POLY)

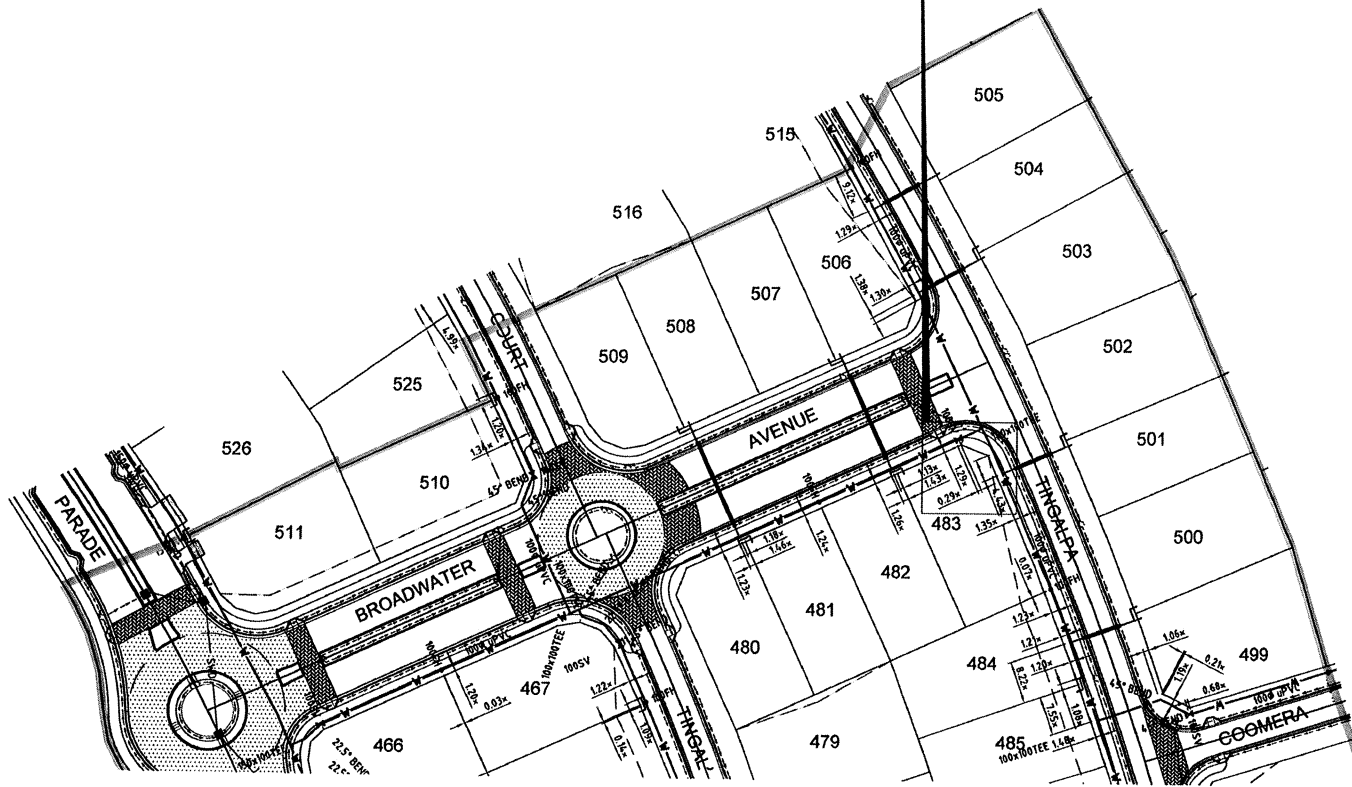
WATER NOTES

1. ALL WATER MAINS LOCATED 12m ALIGNMENT OFFSET FROM PROPERTY BOUNDARIES UNLESS SHOWN OTHERWISE
2. THIS DRAWING IS TO BE READ IN CONJUNCTION WITH CITY OF THURINGOWA STANDARD DRAWINGS (WATER).
3. ALL UPVC MAINS ARE SERIES 2, PN16 TO AS/NZS 1477 RUBBER RING JOINTED, WITH SOCKETED D.I.G.L. FITTINGS U.N.O.
4. CONNECTION TO EXISTING THURINGOWA COUNCIL WATER MAINS WERE CARRIED OUT BY THE CONTRACTOR UNDER COUNCIL SUPERVISION
5. CONNECTION TO EXISTING NO WATER MAINS CARRIED OUT BY NO WATER AT THE CONTRACTOR'S EXPENSE.

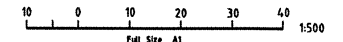
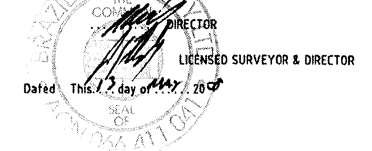


DATUM

PH No. 133651 LOCATED ON HERVEY RANGE ROAD (BOLT IN BITUMEN) RL 19.248m AHD



BRAZIER MOTTI PTY LTD. ACN 066 411 041
 595 FLINDERS ST. TOWNSVILLE, HEREBY CERTIFY THAT THIS DRAWING ACCURATELY AND CORRECTLY DESCRIBES AND RECORDS THE NATURE AND LOCATION OF THE WORKS DEPICTED BY ASTERISKS (*) HEREON AS THEY HAVE BEEN CONSTRUCTED FOR SUBDIVISION.



FOR CONTINUATION REFER DWG CT-1403-106

Issue: 14/02/2008 (REVISED) File Name: 1403-106 - Water Reticulation Stage 5A - 1:500.dwg User: JJJ Date: 14/02/2008

No.	Amendments	By	Appd	Date	No.	Amendments	By	Appd	Date
A	ORIGINAL ISSUE	SJJ		07/02/08					



BMD CONSULTING
 Civil Engineers
 Structural Engineers
 & Project Managers
 4th Floor, 100 Queen Street, Brisbane QLD 4000
 Ph: (07) 4754 7000 Fax: (07) 4759 7077
 Email: bmd@bmdconsulting.com.au
 Head Office - Brisbane Ph: (07) 3893 5511
 Sydney Office Ph: (02) 9898 5430
 Cairns Office Ph: (07) 4235 9544

Design	SJJ
Drawn	SJJ
Checked	J.L.
Original Approved By:	<i>[Signature]</i>
RPEQ No.	7948
Date	APR 2008

Client	URBEX PTY LTD
Project	KALYNDA STAGE 5A
Title	WATER RETICULATION LAYOUT PLAN (SHEET 2 OF 2)
As Constructed	AS CONSTRUCTED
Drawing No.	CT-1403-106
Rev	A