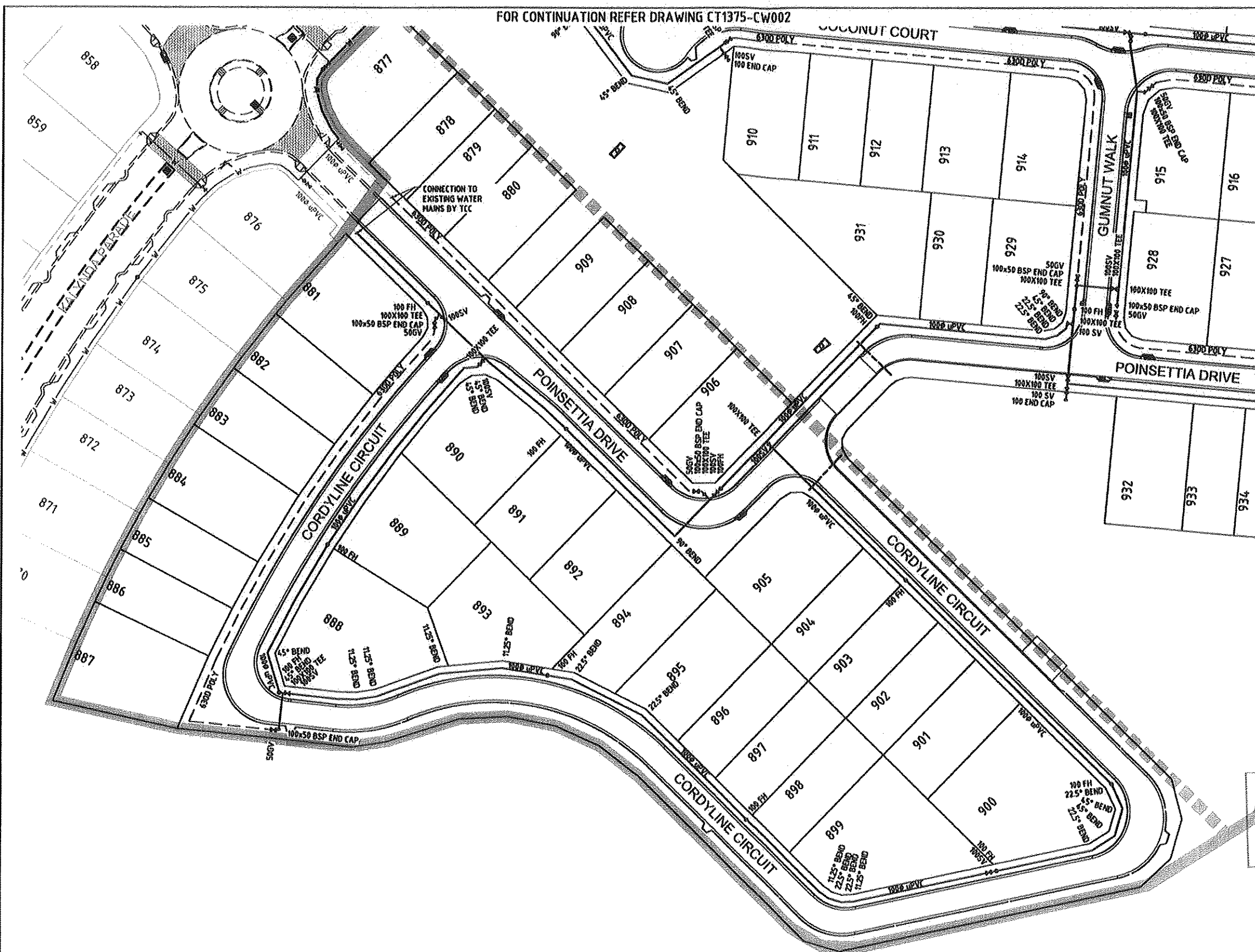


FOR CONTINUATION REFER DRAWING CT1375-CW002



WATER LEGEND

- EXISTING WATER MAIN
- WATER MAIN
- - - 63 OD POLYETHYLENE LOOP MAIN
- FH FIRE HYDRANT
- SV SLUICE VALVE
- GV GATE VALVE
- TEE TEE
- END CAP
- - - CLASS 9 uPVC IRRIGATION ENVELOPE CONDUITS AS PER LANDSCAPE DRAWINGS

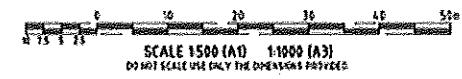
WATER NOTES

1. ALL WATER MAINS TO BE LOCATED 1.0m ALIGNMENT OFFSET FROM PROPERTY BOUNDARIES UNLESS SHOWN OTHERWISE
2. THIS DRAWING IS TO BE READ IN CONJUNCTION WITH TOWNSVILLE CITY COUNCIL STANDARD DRAWINGS (WATER).
3. ALL uPVC MAINS TO BE SERIES 2, PN16 TO AS/NZS 1477 RUBBER RING JOINTED, WITH SOCKETED D.I.C.L. FITTINGS U.N.O.
4. CONNECTION TO EXISTING TCC WATER MAINS TO BE CARRIED OUT BY THE CONTRACTOR UNDER COUNCIL SUPERVISION
5. CONNECTION TO EXISTING HQ WATER MAINS TO BE CARRIED OUT BY HQ WATER AT THE CONTRACTOR'S EXPENSE.
6. CONTRACTOR TO VERIFY ALL UNDERGROUND SERVICES WITH THE RELATIVE AUTHORITIES PRIOR TO ANY EXCAVATION

FOR CONTINUATION REFER DRAWING CT1375-CW002

APPROVED SUBJECT TO CONDITIONS

TOWNSVILLE CITY COUNCIL
REC'D 28 FEB 2012
AMENDED PLANS



No.	Revisions	Drawn	Design	Appd	Registered Engineer	Reg No.	Date
B	TCC RFI 2012-01-25	SFL	SFL			5918	28.02.12
A	ORIGINAL ISSUE	S.J.J.	W.E.S.			5918	08.07.11



BMD consulting

1st Floor,
87 Mitchell Street North West QLD 4810
PO Box 6008 Townsville QLD 4810
P: 07 4760 7000 F: 07 4760 7077
E: townsville@bmd.com.au
www.bmd.com.au
ABN 23 610 743 002

Civil Engineers • Structural Engineers • Project Managers • Water Servicing Co-ordinators
brisbane • calma • carumba • gladstone • gold coast • Mackay • Sydney • Townsville

Client	URBEX PTY LTD
Project	KALYNDA STAGE 10
Title	WATER RETICULATION LAYOUT PLAN (SHEET 1 OF 2)

Datum	AHD
PBM	191881
RL	10.248
AHD	
NOT FOR CONSTRUCTION	
Project No.	CT1375-CW001
Drawing No.	
Rev	B

This drawing cannot be copied or reproduced in any form or used for any purpose other than that originally intended without the written permission of BMD Consulting Pty Ltd. © COPYRIGHT 2010