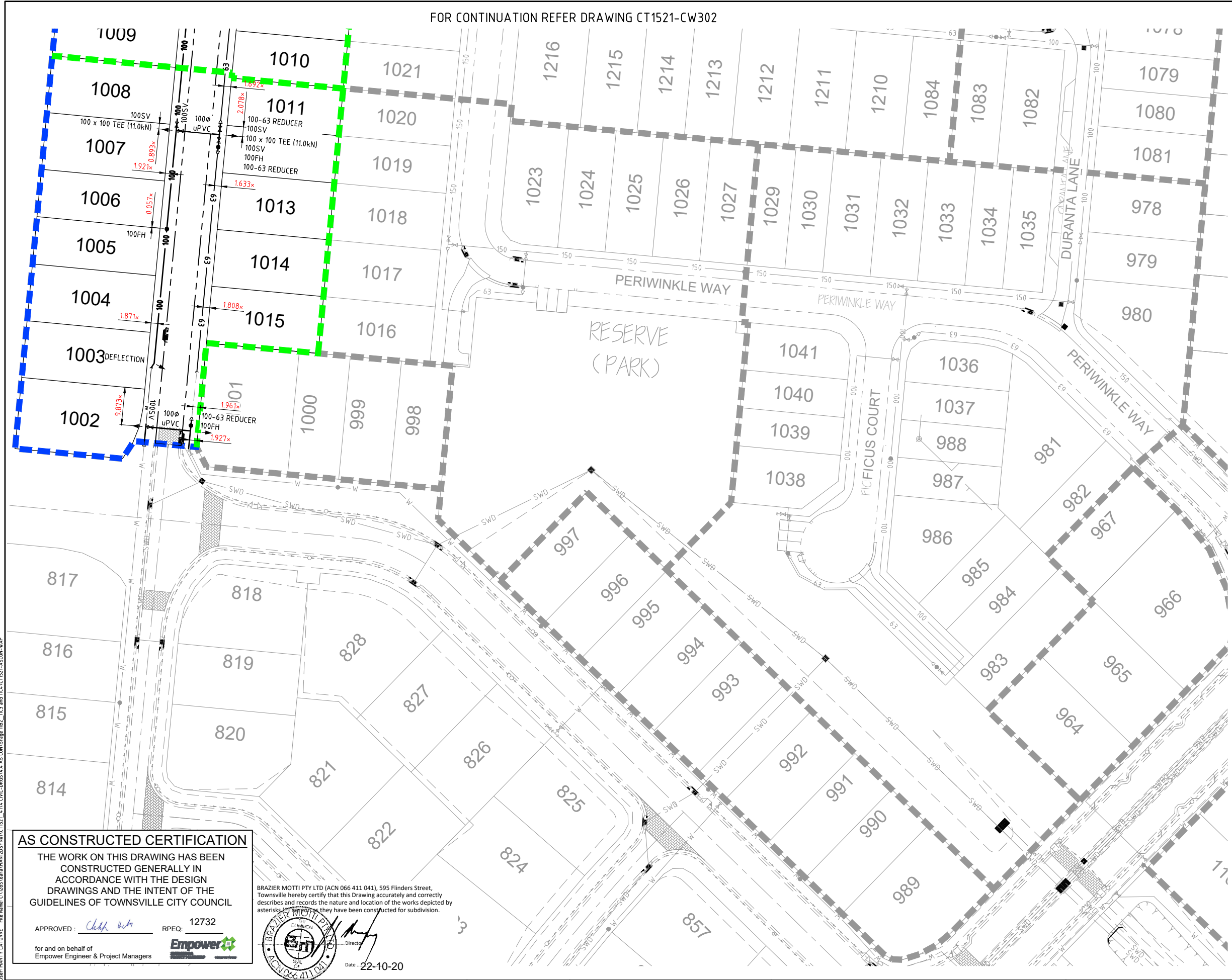


User: MARTY LATOBBE File Name: C:\Users\marty\Documents\1521 CT1521-CW302 11B2, 11C3 and 11C4\CT1521-CW302-WAP Plot Date: 2/10/2020 8:10:54 AM

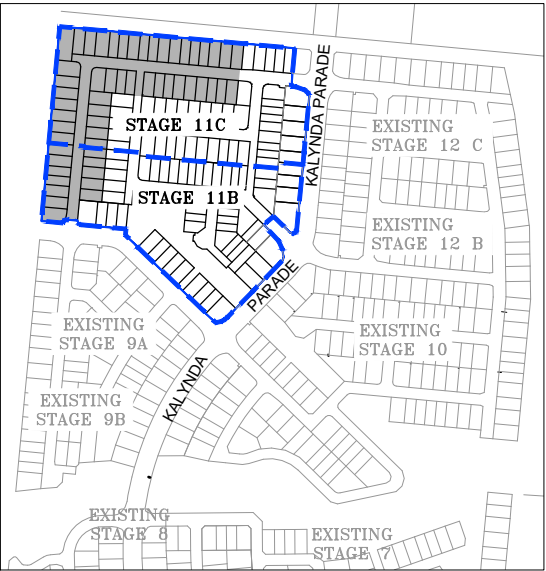


WATER LEGEND

- 100 WATER MAIN (Ø100 uPVC)
- 150 WATER MAIN (Ø150 uPVC)
- 200 WATER MAIN (Ø200 uPVC)
- 63 63 OD POLYETHYLENE LOOP MAIN
- W EXISTING WATER
- SUB-STAGE BOUNDARY
- STAGE BOUNDARY
- FH FIRE HYDRANT
- SV SLUICE VALVE
- 50GV GATE VALVE
- TEE
- END CAP
- THRUST BLOCK

WATER NOTES

- ALL WATER MAINS ARE LOCATED 1.8m ALIGNMENT OFFSET FROM PROPERTY BOUNDARIES UNLESS SHOWN OTHERWISE.
- THIS DRAWING IS TO BE READ IN CONJUNCTION WITH TOWNVILLE CITY COUNCIL STANDARD DRAWINGS (WATER).
- ALL uPVC MAINS ARE SERIES 2, PN16 TO AS/NZS 1477 RUBBER RING JOINTED, WITH SOCKETED D.I.C.L. FITTINGS UNLESS NOTED OTHERWISE.



LOCALITY PLAN

NOT TO SCALE

SCALE 1:500 (A1) 1:1000 (A3)  
DO NOT SCALE USE ONLY THE DIMENSIONS PROVIDED.

AS CONSTRUCTED CERTIFICATION

THE WORK ON THIS DRAWING HAS BEEN CONSTRUCTED GENERALLY IN ACCORDANCE WITH THE DESIGN DRAWINGS AND THE INTENT OF THE GUIDELINES OF TOWNVILLE CITY COUNCIL

APPROVED: *Chad Webb* RPEQ: 12732

for and on behalf of  
Empower Engineer & Project Managers



BRAZIER MOTTY PTY LTD (ACN 066 411 041), 595 Flinders Street, Townsville hereby certify that this Drawing accurately and correctly describes and records the nature and location of the works depicted by asterisks (\*) and they have been constructed for subdivision.



Date: 22-10-20

*Chad Webb*  
Registered Engineer  
22/10/2020  
Date Register  
12732

ENGINEERING CERTIFICATION



Client: URBEX PTY LTD  
Project: KALYNDIA CHASE STAGE 11B2, 11C3 AND 11C4  
Title: WATER RETICULATION LAYOUT (SHEET 1 OF 2)

Datum: AHD  
PSM 131651  
RL 19.248M (MGA) COORD  
AS CONSTRUCTED  
Project No. Drawing No. Rev  
CT1521-CW301 1

AS CONSTRUCTED CERTIFICATION

THE WORK ON THIS DRAWING HAS BEEN  
CONSTRUCTED GENERALLY IN  
ACCORDANCE WITH THE DESIGN  
DRAWINGS AND THE INTENT OF THE  
GUIDELINES OF TOWNSVILLE CITY COUNCIL

APPROVED: *Chad Webb* RPEQ: 12732

for and on behalf of  
Empower Engineer & Project Managers



BRAZIER MOTTY PTY LTD (ACN 066 411 041), 595 Flinders Street,  
Townsville hereby certify that this Drawing accurately and correctly  
describes and records the nature and location of the works depicted by  
asterisks (\*) as they have been constructed for subdivision.



Date: 22-10-20

